

SOLDER RELIABILITY SOLUTIONS™, SRS 1.1

PC-BASED SOFTWARE TO BUILD-IN SOLDER JOINT RELIABILITY IN STANDARD SN-PB ASSEMBLIES AND PREVENT WEAR-OUT FAILURES IN THE FIELD.

PRODUCT BROCHURE, PRICES AND ORDERING INFORMATION – JULY / SEPT. 2013.

NOTE: Windows XP Virtual is required to run software on Windows 7 computers.

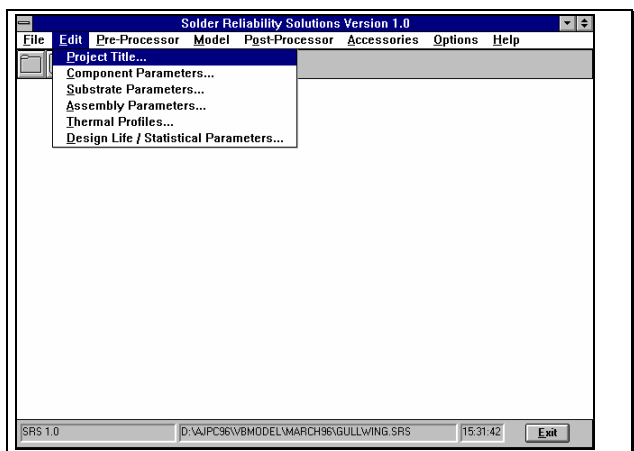
WHY SRS?

Cyclic thermal stress conditions in surface mount assemblies leads to **solder fatigue**, a major cause of failure in electronic systems. To help prevent wear-out failures, the SRS software estimates **standard SnPb** solder joint fatigue life and enables **building-in reliability in the design and manufacturing stages** of product development. SRS is the PC implementation of thermal stress and life prediction methodologies that capture years of thermal cycling model development across the electronics industry.

FEATURES

- Microsoft Windows™ environment.
- Interactive data entry, Windows™ filing system, Help File.
- Pre-processor and post-processor modules.
- Stress/strain analysis (includes solder creep).
- Statistical life predictions.

SRS is a **PC-based design-for-reliability tool** that enables rapid “**what if**” analysis of the effects of board, component and thermal load parameters on the attachment reliability of near-eutectic tin-lead assemblies.

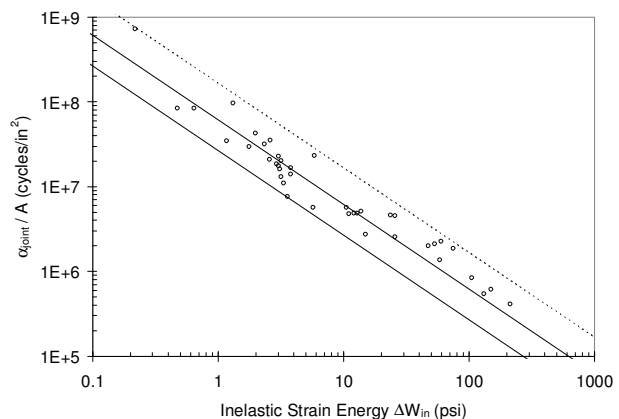


PHYSICAL MODEL

SRS implements **analytical / empirical models** that correlate solder joint fatigue life to cyclic inelastic strain energy **for NEAR-EUTECTIC TIN-LEAD (SN-PB) assemblies**. The reliability model is validated by over 50 accelerated tests and the correlation of solder joint thermal fatigue lives over **three orders of magnitude**.

Model input includes:

- Component, board and assembly geometry and material properties (CTEs ...).
- Thermal profiles: cold and hot temperatures, dwell times, frequency, including multiple thermal loads.
- Targeted design life; statistical parameters.

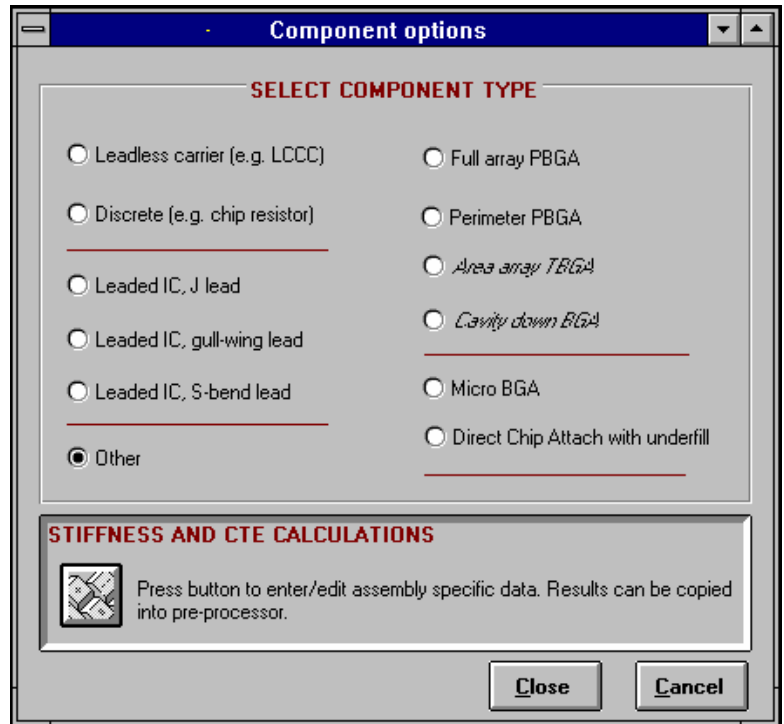


Fit of thermal cycling test results to SRS model.

STIFFNESS / COMPONENT OPTIONS

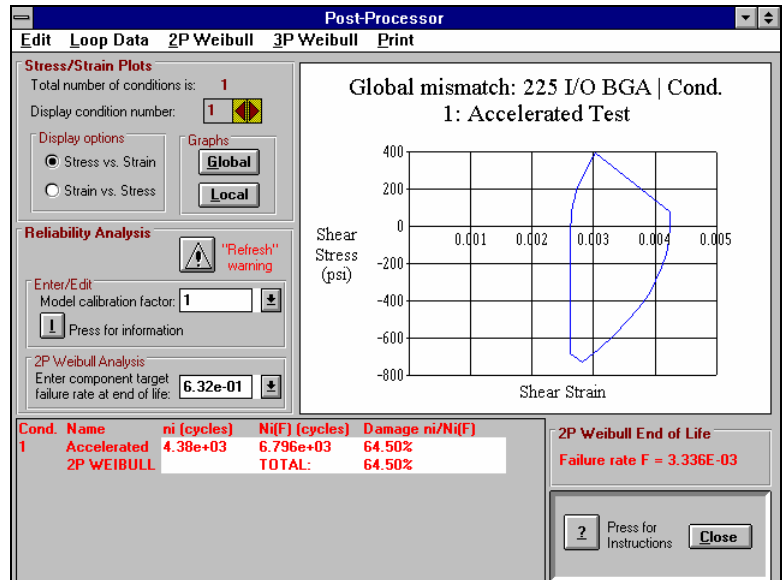
- The assembly stiffness, which accounts for the elastic deformations of the assembly, impacts the solder joint stress / strain response and fatigue life. Design tools are provided to determine stiffness parameters for common families of surface mount components and assemblies.
 - Conventional leadless and leaded components (gull-wing, S, J lead shapes).
 - PBGA: full and perimeter array.
 - DCA /flip-chip with underfill; micro-BGA with compliant layer strain relief.
 - Model also applies to cavity down BGAs.

Note: EPSI offers mechanical analysis services to determine stiffness parameters for less common or specialized components and assemblies.



OUTPUT

- Stress/strain hysteresis loops and tables.
- Cumulative damage distribution (chart and tables).
- Two and three parameter Weibull statistics, failure rates, failure free time.
- Model calibration to fit predicted life to test results.
- Copy plots to printer or clipboard.
- Listing of input data (for pasting into text editor).



SYSTEM REQUIREMENTS

- PC running Microsoft Windows™ up to Vista, XP (Virtual XP under Windows 7 Professional), Mac/PowerPC™ running Insignia SoftWindows™; 4 Mbytes of RAM, 4 Mbytes of hard drive space.

ABOUT THIS OFFER

SRS 1.1 is currently offered at a reduced price. Under the terms of this offer, customers get free software (not technical) support - see page 6 - for one year. Technical support can also be purchased on an hourly basis (see 4th item in pricing table, p. 3 or 4).

SINGLE USER LICENSE: SRS 1.1 SPECIAL OFFER[†], JULY / SEPT. 2013 PRICES
ORDERING INFORMATION (MUST BE FILLED)

Send your product registration (this page) along with payment or P.O. number to:
 EPSI Inc. Attn: Dr. Jean-Paul Clech, P.O. Box 1522, Montclair, NJ 07042 - USA
 or fax this form with your purchase order, shipping and billing address to: +1 (973)746-3796.

	Price	Quantity	TOTAL
SRS 1.1: one copy (CD-ROM) per user	US \$1450 ⁽¹⁾ each		
Shipping and handling ⁽²⁾ – USPS Priority Mail (standard)	US \$20 each		
Next day USPS Express Mail delivery (US only)	US \$30 each		
Technical / engineering support (see p.6): \$185/hour (pre-paid only)	US \$185/hour		

For collect shipping, please provide your company's account number with the preferred carrier of your choice: _____

Sub-total:

Sales tax ⁽³⁾:

TOTAL: US \$ _____

Note: prices are subject to change without notice. Call for current list price.

Purchase comes with a 30 day money back guarantee (minus shipping and handling charges).

⁽¹⁾ International - The recipient is responsible for all taxes, bank fees and duties customary to international shipments and payments.

⁽²⁾ Standard shipping via USPS Priority Mail, US orders only (delivery within 3 business days). Call for Canadian/overseas.

⁽³⁾ NJ residents, add 7% sales tax. EPSI reserves the right to correct all tax rates and/or collect all sales taxes, as required by law.

PRODUCT REGISTRATION INFORMATION

SRS 1.1 copy registered[‡] to (Name of End User and Organization):

First Name: _____ Last Name: _____
 Title: _____ Company Name: _____
 Address: _____
 City: _____ State / Zip Code: _____
 Country: _____
 Phone: _____ Fax: _____
 E-mail: _____

Note: for quantities of two or more, send registration information for each user on separate copies of this form.

MODE OF PAYMENT

US Check or International Money Order in US \$ - Make check or order payable to EPSI Inc.

Purchase Order No. (major institutions only): _____

Enclose copy, e-mail to jpclech@aol.com or fax to (973)746-3796. Terms are net 30 days.

[†] This *special offer* of SRS 1.1 entitles the registered user to:

- A free one hour tutorial to learn how to use the software - please call at your convenience, tutorial will get you up the learning curve fast. This tutorial covers software operation and is NOT for technical / analytical support.
- Free software support for one full year. See page 6 for definition of software support.

[‡] SRS 1.1 is licensed to individual users for use on multiple machines. A registered user can install the software on several computers (laptop, office and home computer) as long as *s/he is the only individual using the software. License is NOT TRANSFERABLE, separate copies must be purchased by other individuals who wish to use the software.*

SRS 1.1-D: DEPARTMENT LICENSE, JULY / SEPT. 2013 PRICES

ORDERING INFORMATION (MUST BE FILLED)

Send your product registration along with payment or Purchase Order number to:

EPSI Inc. Attn: Dr. Jean-Paul Clech, P.O. Box 1522, Montclair, NJ 07042 - USA
 or fax this form with your purchase order, shipping and billing address to: +1 (973)746-3796.

Item Designation / Description	Price ^{(1),(2)}	Maintenance ⁽³⁾	TOTAL
SRS 1.1- D3: up to 3 users & installation on up to 3 computers.	US \$3400.00	US\$575.00	
SRS 1.1- D6: up to 6 users & installation on up to 6 computers.	US\$5800.00	US\$1155.00	
SRS 1.1- D12: up to 12 users & installation on up to 12 computers.	US \$9500.00	US\$2300.00	
Technical / engineering support (see p.6): \$185/hour (pre-paid only)	US \$185/hour	x # of hours:	

Sub-total:

Sales tax ⁽⁴⁾:

TOTAL: US \$ _____

Note: prices are subject to change without notice. Call for current list price.

Purchase comes with a 30 day money back guarantee.

⁽¹⁾ International - The recipient is responsible for all taxes, bank fees and duties customary to international shipments and payments.

⁽²⁾ Includes shipping and handling via USPS Priority Mail (US only). Canadian/overseas: call for S/H charges.

⁽³⁾ Yearly maintenance fee is optional. Maintenance includes unlimited software support for 1 year and 1 hour of training or technical consulting per user up to the maximum number of authorized users.

⁽⁴⁾ NJ residents, add 7% sales tax. EPSI reserves the right to correct all tax rates and/or collect all sales taxes, as required by law.

PRODUCT REGISTRATION INFORMATION

SRS 1.1 copy registered[‡] to **(Provide Name of Primary Contact and Department / Organization):**

DEPARTMENT/ ORGANIZATION _____

PRIMARY CONTACT: First Name: _____ Last Name: _____

Title: _____ Company Name: _____

Address: _____

City: _____ State / Zip Code: _____

Country: _____

Phone: _____ Fax: _____

E-mail: _____

MODE OF PAYMENT

US Check or International Money Order in US \$ - Make check or order payable to EPSI Inc.

Purchase Order No. (major institutions only): _____

Enclose copy via e-mail or send fax to +1 (973)746-3796. Terms are net 30 days.

[‡] SRS 1.1-Dx is licensed to a designated department with a maximum number of authorized users as indicated in the item/description box of the price table above. The software is installed by the designated primary contact person for use on multiple machines (including laptop computers) within the department. The maximum authorized number of simultaneous installations of the software is the maximum number of users. *Separate copies must be ordered by other individuals from other departments or organizations who wish to use the software.*

**SOLDER RELIABILITY SOLUTIONS™, VERSION 1.1 (SRS 1.1)
LICENSE AGREEMENT**

Carefully read all the terms and conditions of this agreement before opening the software container. Opening the software container indicates your acceptance of the terms and conditions of this license.

The program is protected by copyright law and international treaties. Your right to use the program is limited to the terms and conditions described herein.

License and Use of Software

SRS 1.1 is licensed to single users for possible use on multiple machines. A registered and licensed user can install the software on multiple computers (portable, office and home computers) provided s/he is the only individual using the software. This software license is NOT TRANSFERABLE to others. Other individuals wishing to use the software must purchase their own copy. It is acceptable for the registered owner to reinstall this software or create a back-up copy of the original disk in order to update an existing copy or replace a corrupted or missing version of the program.

Department license: If you purchased a department license, SRS 1.1 is licensed to a designated department with a maximum number of authorized users or "seats", as indicated in your purchase order. The software is installed by or under the control of the designated primary contact person for use on multiple machines (including laptop computers) within the department. The maximum authorized number of simultaneous installations of the software is the maximum number of users. Separate copies must be ordered by other individuals from other departments or organizations who wish to use the software.

You may not: (a) distribute copies of the program to others; (b) rent, lease or grant licenses or other rights to the program; (c) provide third parties access to the program through network, time-sharing or other multiple user arrangement; (d) translate, reverse-engineer or otherwise alter the program, without the prior written consent of EPSI Inc. Unauthorized reproduction or distribution of this software or any portion of it is prohibited, may result in severe penalties and will be prosecuted to the maximum extent of the law.

Terms

Your license to use the program will automatically terminate if you fail to comply with the terms of this Agreement. If this license is terminated, you agree to destroy all copies of the program in your possession.

Limited Warranty

EPSI Inc. warrants to the registered and licensed user of this program that the disk on which this program is recorded will be free of defects in materials and workmanship under normal use for a period of 90 days from the date of purchase. EPSI Inc.'s liability pursuant to this limited warranty shall be limited to the replacement of the defective disk.

Damages and Liability

EPSI Inc. does not guarantee the usefulness and accuracy of any analysis performed with the SRS software. Assessing the program applicability and the usefulness and accuracy of the analysis results is the sole responsibility of the licensed and registered user. EPSI Inc. shall not be liable for possible technical limitations and/or errors in the SRS software and the underlying physical models and algorithms. No warranty is implied except as provided by law.

In no event shall EPSI Inc. be liable for incidental, consequential or compensatory damages, including but not limited to loss of revenues or profit, losses and damages sustained by third parties, resulting from the use of the SRS software.

This license agreement shall be governed by the laws of the State of New-Jersey and shall inure to the benefit of EPSI Inc., its successors, representative and assigns.

SOFTWARE SUPPORT

Operational software support is available exclusively to qualified, licensed registered users of the software. Software support covers operational use of the SRS software tool per se, installation and computational issues. Software support does not cover engineering, technical, modeling / reliability issues. The latter are addressed under "Technical Support".

TECHNICAL SUPPORT

Technical support covering materials, modeling questions, applications, definitions, interpretation of results, reliability issues, guidelines etc... is available upon request, or can be purchased with a software license (see 4th item in price table, page 3 or 4). Please call (973)746-3796 or send e-mail to jpclech@aol.com to discuss how your specific needs can be addressed. Technical support is also available as: on-site training / workshops, or phone / e-mail engineering support via an open purchase order (with payment terms: Net 30 Days from the date of receipt of purchase order) or pre-payment of a set number of support hours at the current 2013 rate of US\$185/hour.

TECHNICAL/SUPPORT IS PRE-PAID ONLY, EITHER BY CHECK OR BY PURCHASE ORDER, WHICH WE INVOICE IMMEDIATELY UPON RECEIPT OF P.O. (NO EXCEPTION).

PURCHASING OF 4 TO 8 HOURS OF TECHNICAL SUPPORT AT THE TIME OF PURCHASE OF THE SOFTWARE LICENSE IS HIGHLY RECOMMENDED FOR NEW USERS OF THE SRS TOOL. THIS ENSURES A GOOD HEAD-START IN THE SETUP OF YOUR FIRST FEW ANALYSIS FILES AND THE INTERPRETATION OF TEST RESULTS. TECHNICAL SUPPORT IS OFTEN USED, FOR EXAMPLE, TO REVIEW INPUT DATA AND DISCUSS ANALYSIS RESULTS.

FOR TECHNICAL / ENGINEERING SUPPORT, PLEASE INCLUDE NUMBER OF HOURS YOU WISH TO PURCHASE (PRE-PAID) ON ORDER FORM (PAGE 3 OR 4). TECHNICAL SUPPORT IS TYPICALLY VIA E-MAIL OR TELEPHONE. WE KEEP TRACK OF TIME USED AND WILL INFORM YOU WHEN THE PRE-PAID NUMBER OF HOURS HAS BEEN EXHAUSTED. FOR A TYPICAL USER, 4 TO 8 HOURS OF TECHNICAL SUPPORT COVERS A LOT OF GROUND OVER A ONE YEAR PERIOD. UNUSED HOURS CARRY OVER FROM YEAR TO YEAR. TECHNICAL SUPPORT IS FOR LICENSED USERS OR INDIVIDUALS / COLLEAGUES AUTHORIZED BY THE PURCHASER OF TECHNICAL SUPPORT HOURS.

WHAT USERS OF THE SOLDER RELIABILITY SOLUTIONS SOFTWARE SAY

COMMENTS PUBLISHED BY USERS OF THE SOLDER RELIABILITY SOLUTIONS SOFTWARE

"PROS:

- **Predicts time to first failure (3P Weibull) or any other % failure (2P).**
- **Computation time Very fast (about 2 sec.)**
- **Easily handles multiple thermal conditions (Miners rule)**
- **Inexpensive (\$1200).**
- **Good for examining material/design changes.**

CONS:

- **Currently used for eutectic Pb/Sn solder.**

.....

- **Based upon the accuracy, ease of use, and program cost the SRS code appears to be a "best buy".**"

R. Wavrik, J. Aragon, J. White, P. Vianco, A. Kilgo and J. Sweet, "Comparison of Solder Fatigue Life Models to Experimental Data", presentation given at 2006 Components for Military & Space Electronics Conference, 10th Annual CMSE Conference, February 6-9, 2006, Los Angeles, CA.

"Simple PC based model (not FEM) which executes quickly...."
"Over 300 part types / board combinations evaluated by the SRS code..."
"SRS code does a good job of predicting time to first failures (also life remaining)" ,
Wavrik et al., Sandia National Laboratories - US Department of Energy's National Nuclear Security Administration. Ref.: Wavrik, R., Aragon, J., White, J., Vianco, P., Kilgo, A. and Sweet, J.: "Experimental vs. model prediction comparison of solder joint fatigue life for COTS components", in presentation at 2004 International Military & Aerospace / Avionics COTS Conference, Exhibition & Seminar, August 3-5, 2004.

"The SRS model results were substantiated with a life prediction model developed at the University of Colorado", Hunter et al., Storage Technology Corporation & University of Colorado. Ref.: Hunter, B., Subbarayan, G. and Rose, D., "Characterization of PCB expansion using moiré interferometry and the impact of expansion variability on the life of solder joints", Proceedings, InterPACK'99 Conference, EEP-Vol. 26-1, Advances in Electronic Packaging, ASME, June 13-19, 1999, Maui, Hawaii, pp. 875-882.

"The simulation results are in accord with the experimental results, meaning SRS model describes the behavior of the BLP package's solder joint accurately", Choi et al., LG Semicon, Korea. Ref.: Choi, K-S., Kim, Y.-G., Choi, S., Park, I.-S., Lee, J.-H. and Ku, J.-Y., "Solder joint reliability of the BLP package", Proceedings, IPC / SMTA Assembly Expo, Providence, RI, October 24-29, 1998, pp. S19-3-1 - S19-3-6.

"Today the most popular intermediate and high order models use accumulated strain energy as the correlating parameter to estimate the solder joint life. Figure 4 shows the correlation between calculated strain energy and measured joint fatigue life a/A , where a is the characteristic number of cycles to 63.2% failures and A is the minimum load bearing area in the joint. The strain energy density (AW) in the figure is calculated with the SRS software but the slope is consistent with other strain-energy based models for SMT assembly reliability. This SRS model has been validated with

several different components including 116 and 220 I/O ceramic CSPs. The intermediate order models calculate the strain energy in one thermal cycle within a few minutes whereas the high order models (FEM) take from approximately one hour to one day to provide the solution." Dr. Savolainen et al., Nokia Group, Helsinki, Finland. Ref.: Savolainen, P. and Tommi Reinikainen, T., "Measuring the manufacturability and reliability of electronic assemblies", Chip Scale Review, Vol. 2, No. 5, November-December 1998, pp. 61-66.

OTHER INDEPENDENT REVIEWS & COMMENTS

"The Clech SRS (Solder Reliability Solutions) model is widely accepted by industries, and has been implemented as a PC-based design-for-reliability tool that enables quick parametric studies of critical package and board properties", in CMAP Report, University of Toronto, Canada. Ref.: MIE 2004 Term Report, Part II, *Review of Thermal Fatigue Prediction Models*, Center for Microelectronics Assembly and Packaging (CMAP), University of Toronto.

"SRS (Solder Reliability Solution) Models predicted that you would see over 1000 thermal cycles more before failure with a double sided reflow BGA than with a single reflow. Tests actually proved that", S. Gregory, IPC TechNet Forum, July 2003.

TO PLACE AN ORDER, FILL IN THE
ORDERING FORM (PAGE 3 or 4), AND
SEND IT ALONG WITH YOUR PURCHASE
ORDER TO JPCLECH@ AOL.COM

IMPORTANT NOTE:

COMPLETE END-USER NAME AND CONTACT INFORMATION (I. E. NAME OF ENGINEER OR TECHNICAL STAFF MEMBER TO WHOM THE SOFTWARE WILL BE LICENSED, NOT THE BUYER'S OR OTHER THIRD PARTY'S) MUST BE PROVIDED IN PAGE 3 OR 4. YOUR ORDER CANNOT BE PROCESSED WITHOUT EXACT NAME AND CONTACT INFORMATION OF END-USER / SOFTWARE LICENSEE.